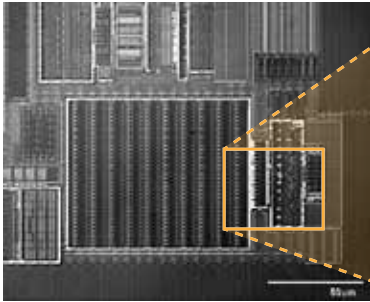


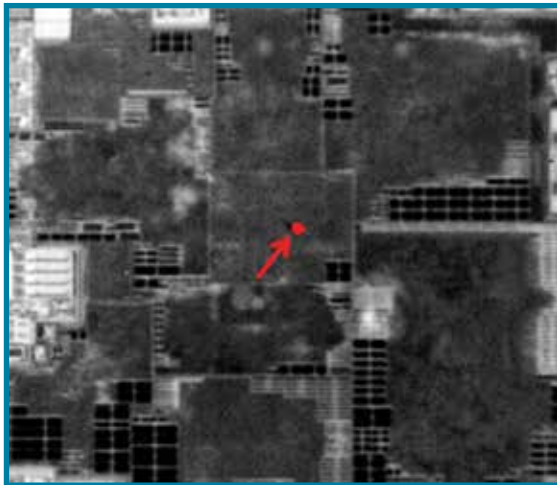
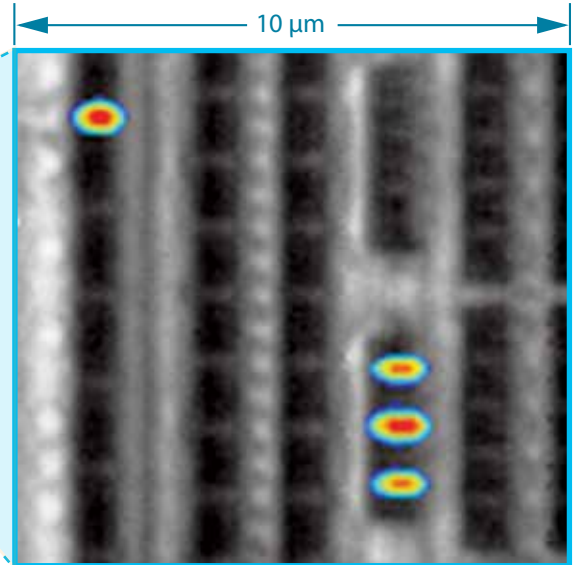
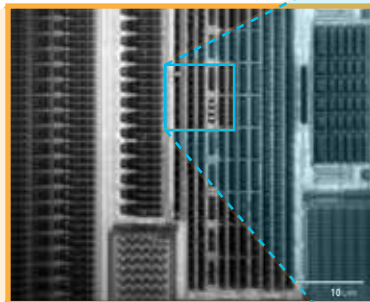
SEMICAPS PEM

PHOTON EMISSION MICROSCOPY

Backside Emission of a 28 nm GPU device (50 X)



Backside Emission on SEMICAPS ASRIL



Backside Emission of Macro Lens
Image: Courtesy of Globalfoundries (S)*



SEMICAPS 1100



SEMICAPS 3000

Features

- Multi Detectors (InGaAs, Cooled-CCD), various array sizes (1k x 1k, 640 x 512, 320 x 256) with cooling options - low noise LN2 or TE cooled (Peltier)
- Dedicated macro lens for high emission sensitivity
- Modular platform - field upgradeable to SOM and LTP
- Flexible and customizable
- Centric and Aplanatic Refractive Solid Immersion lens (RSIL) options

*Microelectronics Reliability Vol 73. June 2017. Pages 76-91

SEMICAPS Pte Ltd

A Company of SEMICAPS Corporation Group

Email: sales@semicaps.com <https://www.semicaps.com>

SEMICAPS
Excellence In Innovation