

# SEMICAPS RSIL

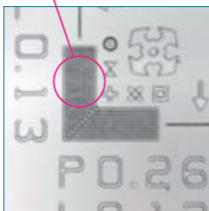
## REFRACTIVE SOLID IMMERSION LENS

### ARSIL resolution target images from backside prepared Metrochip

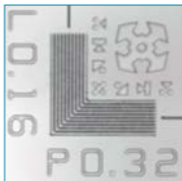
Clearly resolved  
260 nm pitch and  
130 nm line



L-bar targets down to  
280 nm pitch 1064 laser



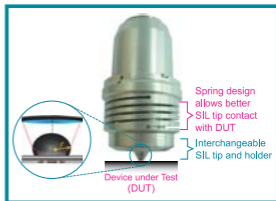
L-bar targets down to  
260 nm pitch 1064 laser



L-bar targets down to  
320 nm pitch 1064 laser

## Features

- Aplanatic RSIL of 3.0 NA resolves 260 nm pitch with 130 nm line-width
- Centric RSIL for imaging silicon wafer with a backside thickness up to 800  $\mu\text{m}$
- RSIL can be used for both inverted and upright systems
- Click and move feature



Patented RSIL Assembly Design