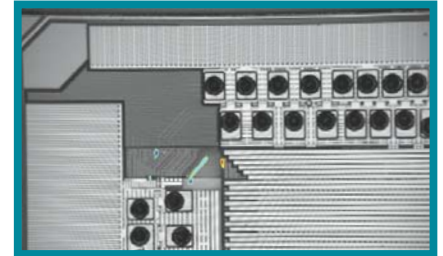
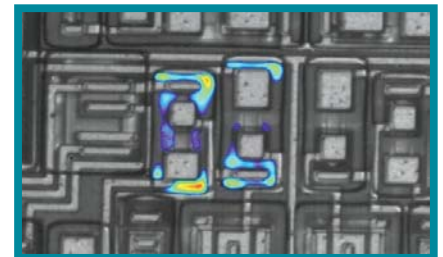


# SEMICAPS PEM

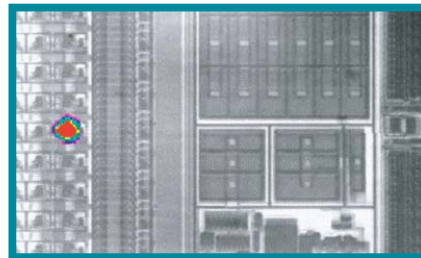
## PHOTON EMISSION MICROSCOPY



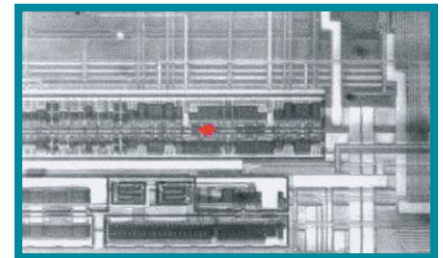
20x PEM Image



20x PEM Image



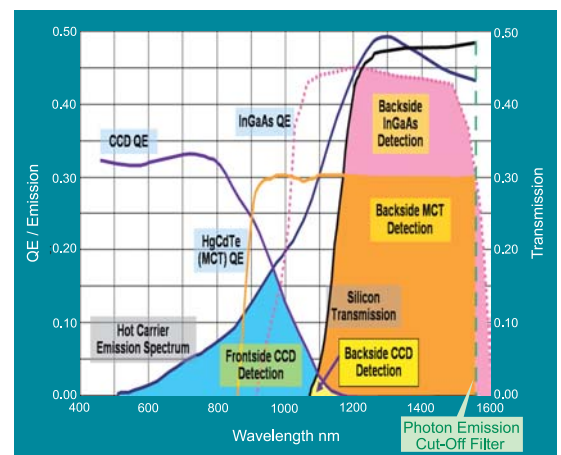
Backside PEM Image of Memory Device



Backside PEM Image of Memory Device; back thinned to 180 μm

## Features

- Multi Detectors (InGaAs, CCD, InSb), various array sizes (1k x 1k, 640 x 512, 320 x 256) with cooling options - low noise LN2 or TE cooled (Peltier)
- Dedicated macro lens for high emission sensitivity
- Modular platform - field upgradeable to SOM and LTP (including frequency mapping)
- Flexible and customizable
- Solid Immersion Lens (SIL) option: able to affix to Centric SIL for ultra high magnification (> 1000x) and resolution (< 240 nm)



FPA Quantum Efficiency